

# RAD CALIBRATION SYSTEMS 1500

Part Number: **23442**



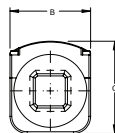
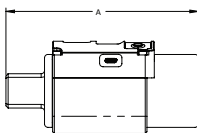
## LIGHTER **FASTER** STRONGER

The RAD Calibration Systems have earned their place in calibration laboratories worldwide because of their high accuracy and repeatability.

### SPECIFICATIONS

Torque Ranges: 75 ft. lbs. – 1500 ft. lbs.  
Weight: 4.0 lbs.  
Square Drive: 1.0"  
Repeatability:  $\pm 1$   
Accuracy:  $\pm 1\%$

### DIMENSIONS



DIMENSION A	DIMENSION B	DIMENSION C
5.60"	2.35"	2.70"



Non  
Impacting



Safe &  
Reliable



Class 1 Division  
2 Group A, B,  
C, D T4



Accredited  
ISO/IEC 17025

**RADTORQUE.COM**

**NEW WORLD TECHNOLOGIES INC**

30580 PROGRESSIVE WAY | ABBOTSFORD, BC V2T 6Z2 | CANADA | **1.800.983.0044**