

# RAD CALIBRATION SYSTEMS 3500

Part Number: **23443**



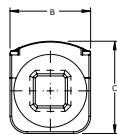
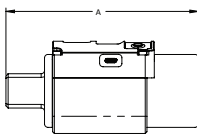
LIGHTER **FASTER** STRONGER

The RAD Calibration Systems have earned their place in calibration laboratories worldwide because of their high accuracy and repeatability.

## SPECIFICATIONS

Torque Ranges: 175 ft. lbs. – 3500 ft. lbs.  
 Weight: 10.0 lbs.  
 Square Drive: 1.5"  
 Repeatability: +/-1  
 Accuracy: +/-1%

## DIMENSIONS



DIMENSION A	DIMENSION B	DIMENSION C
6.75"	2.50"	4.00"



Non Impacting



Safe & Reliable



Class 1 Division  
2 Group A, B,  
C, D T4



Accredited  
ISO/IEC 17025

[RADTORQUE.COM](http://RADTORQUE.COM)

**NEW WORLD TECHNOLOGIES INC**  
 30580 PROGRESSIVE WAY | ABBOTSFORD, BC V2T 6Z2 | CANADA | 1.800.983.0044